

515 E HOPKINS AVENUE
ASPEN, CO 81611
@CATCH | #CATCHSTEAKASPEN

CATCH STEAK
ASPEN

PRIVATE EVENTS
ASPENEVENTS@CATCHHG.COM



CATCHSTEAK

ASPEN



ABOUT

POSITIONED BESIDE THE MOUNTAINS, CATCH STEAK ASPEN COMBINES THE AUTHORITY OF A CLASSIC STEAKHOUSE WITH THE ENERGETIC VIBE OF A CATCH HOSPITALITY GROUP PROPERTY. THE INTIMATE OUTPOST OF THIS NEW YORK AND LOS ANGELES STAPLE IS SPREAD THROUGHOUT TWO LEVELS, INCLUDING AN OUTDOOR TERRACE WITH SWEEPING VIEWS OF ASPEN MOUNTAIN. THE MENU FEATURES A CURATED COLLECTION OF THE WORLD'S BEST CUTS AND CATCH-STYLE DISHES FOR A MORE APPROACHABLE STEAKHOUSE EXPERIENCE.



EVENT SPACES

SPACE	CAPACITY
-------	----------

MAIN FLOOR BUYOUT	500 Cocktail 300 Seated
----------------------	----------------------------

THE RED ROOM	125 Cocktail 80 Seated
-----------------	---------------------------

FULL TERRACE	200 Cocktail 150 Seated
--------------	----------------------------

NORTH TERRACE	75 Cocktail 40 Seated
---------------	--------------------------





MAIN FLOOR BUYOUT

MAIN DINING ROOM CAPACITY

300 Cocktail
150 Seated

MAIN DINING ROOM + TERRACE CAPACITY

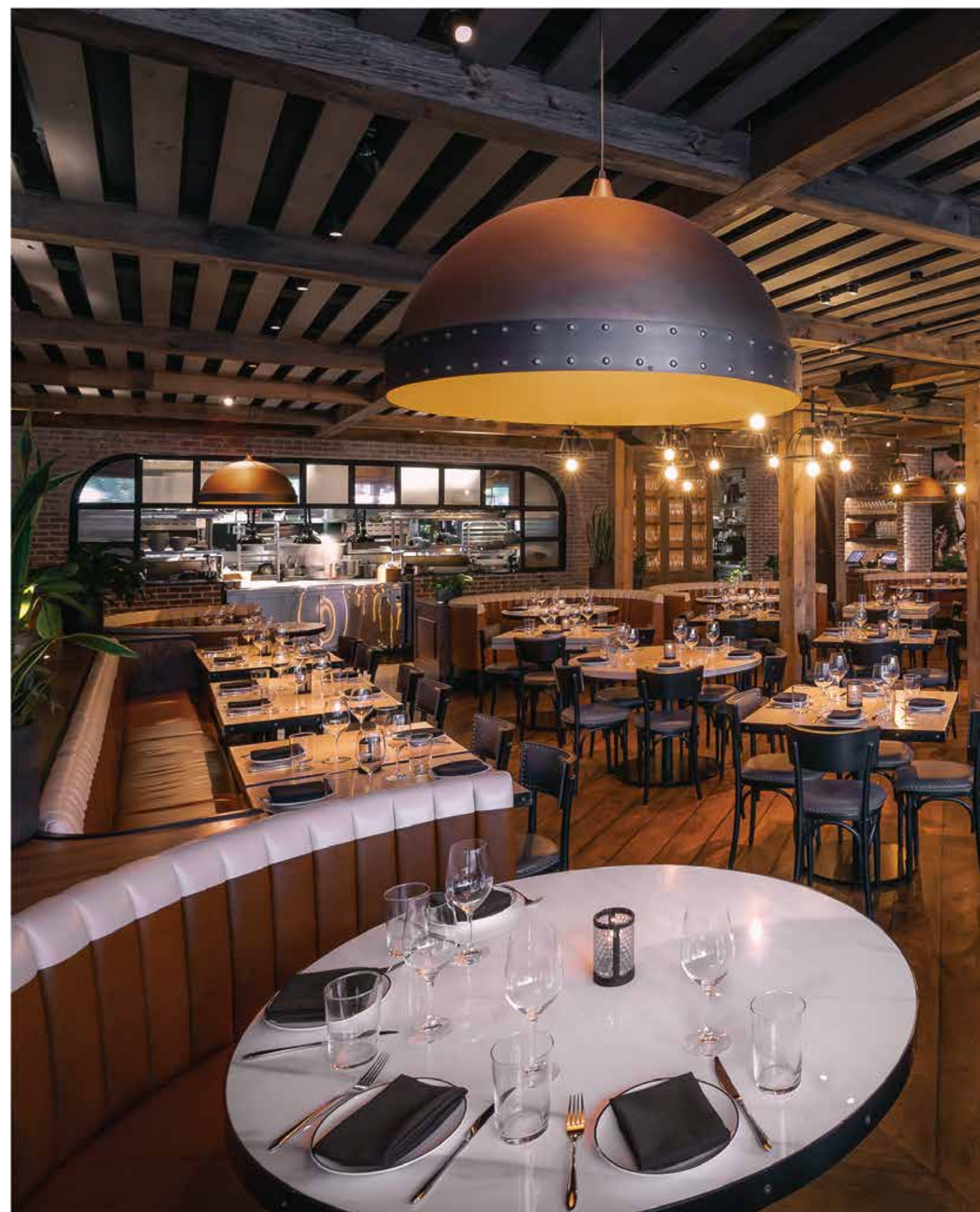
500 Cocktail
300 Seated

AREA

- Main Dining Room - 2400 Sq Ft
- Main Dining Room + Terrace - 5360 Sq Ft

FEATURES

- Indoor, Outdoor Seating With Stunning City & Mountain Views
- Ample Built-in Banquette Seating
- In House, Plug & Play Audio System
- Elevator ADA Access





THE RED ROOM

CAPACITY

125 Cocktail
80 Seated

AREA

1120 Sq Ft

FEATURES

- Curtain Divider To Create Intimacy For Smaller Groups
- Private Entrance (ADA Access)
- Private Restrooms





FULL TERRACE

CAPACITY

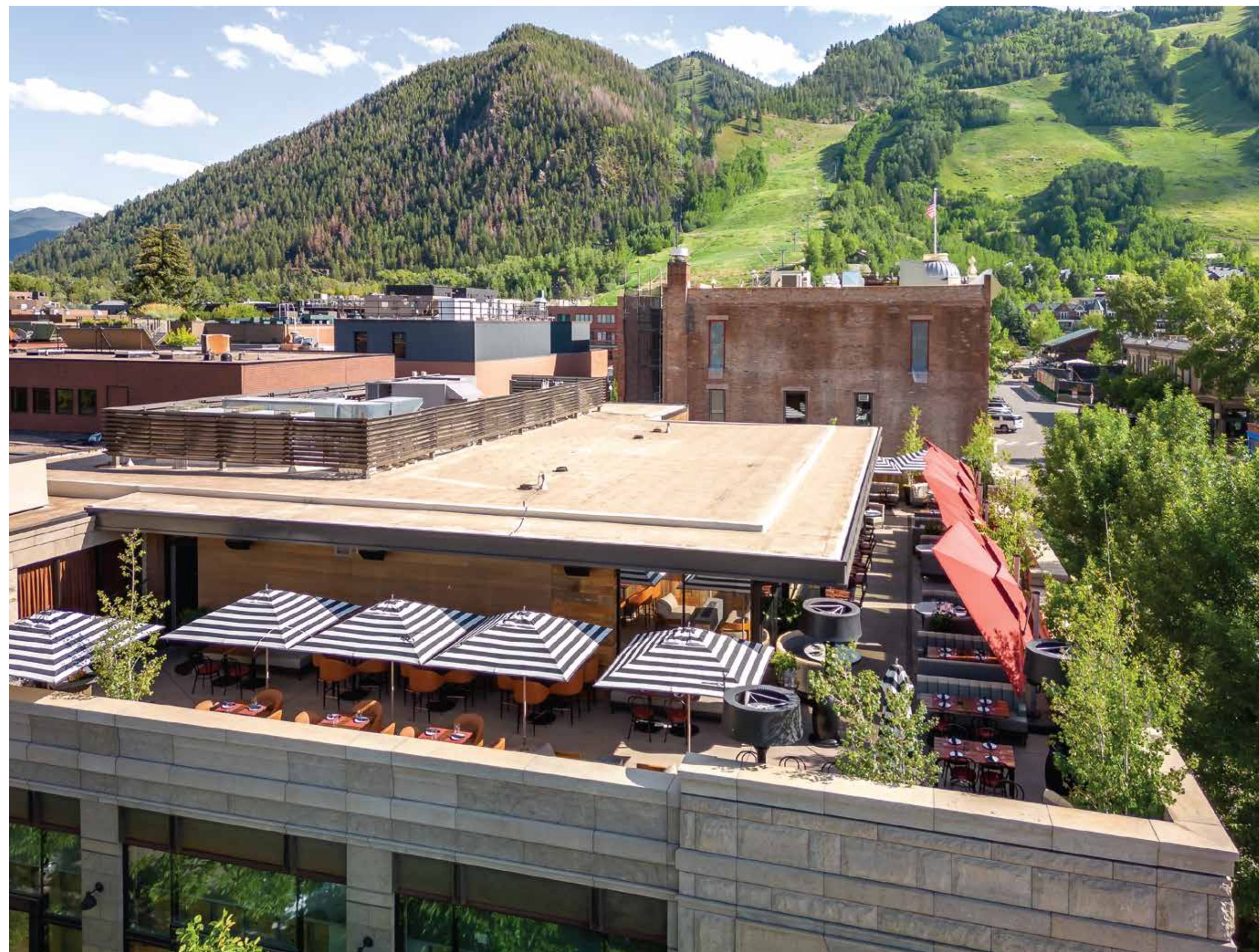
200 Cocktail
150 Seated

AREA

2960 Sq Ft

FEATURES

- Stunning City & Mountain Views
- Private Entrance (ADA Access)
- Private Bar Available
- Fireplace
- *Rain Plan Required*





NORTH TERRACE

CAPACITY

75 Cocktail
40 Seated

AREA

1190 Sq Ft

FEATURES

- Stunning City & Mountain Views
- Semi Private Section Of Outdoor Terrace
- Private Entrance (ADA Access)
- Private Bar Available
- Fireplace
- *Rain Plan Required*



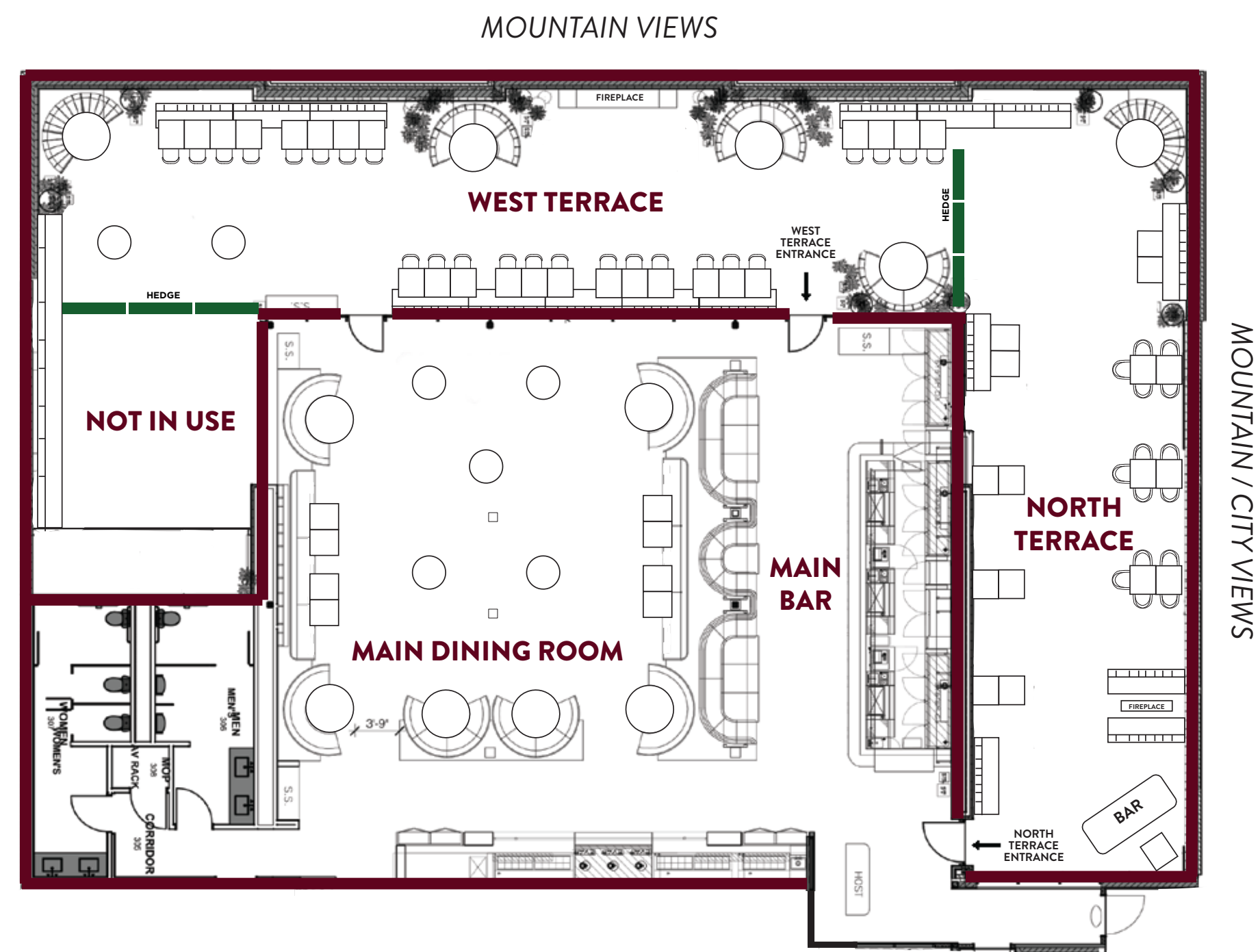


FULL VENUE FLOOR PLAN

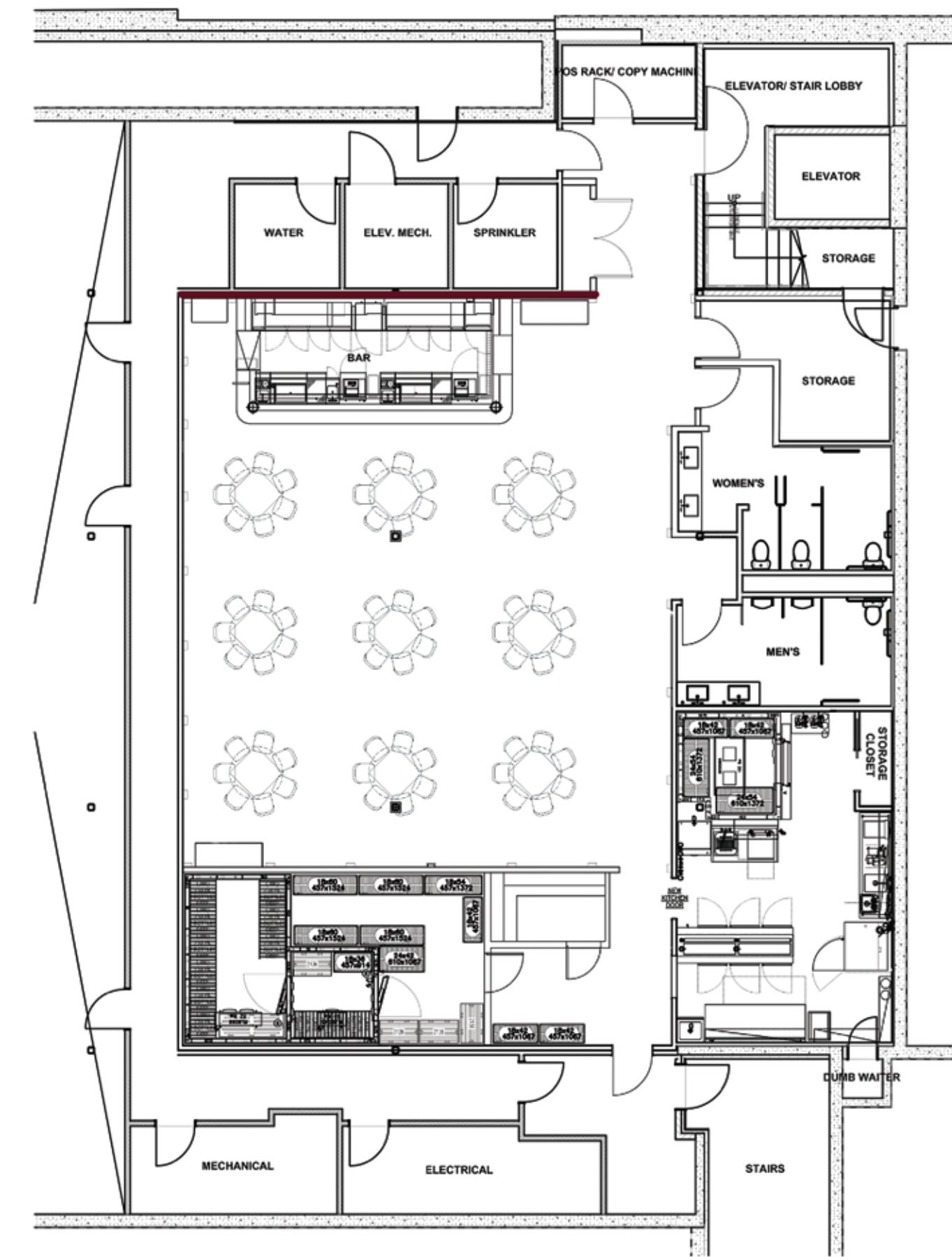
FLOOR PLAN

- Full Terrace Is Comprised of North and West Terrace
- Custom Floor Plans Available Upon Request

MAIN FLOOR FLOORPLAN



RED ROOM FLOORPLAN





CATCHSTEAK

CATERING

**RAISING THE STEAKS
WE COME TO YOU**

LAEVENTS@CATCHHG.COM

@CATCH | #CATCHSTEAKASPEN

CATCH HOSPITALITY GROUP

